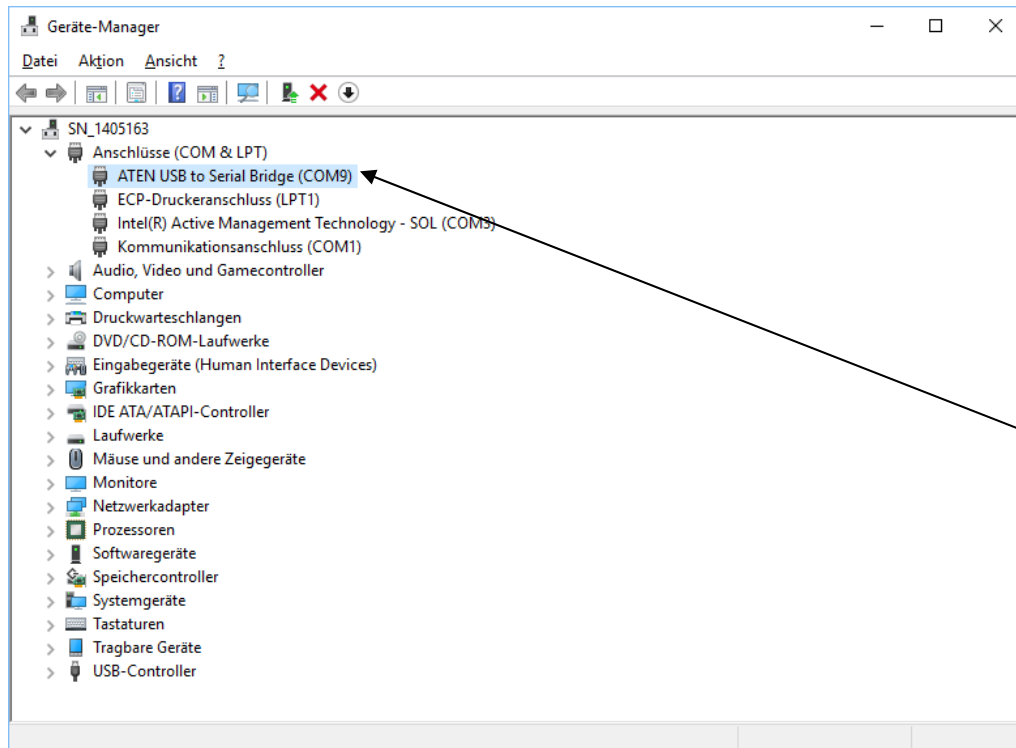


Inc WIN configuration - Version 1.4.1 (2023)

Open directory – Driver USB - IncWin and install the driver: UC232A_Windows_Setup.exe

Connect the USB adapter 232A with cable to the PC.

Open computer device manager - connectors (COM & LPT)
(You can use the batch file DevMgr.bat on USB stick)



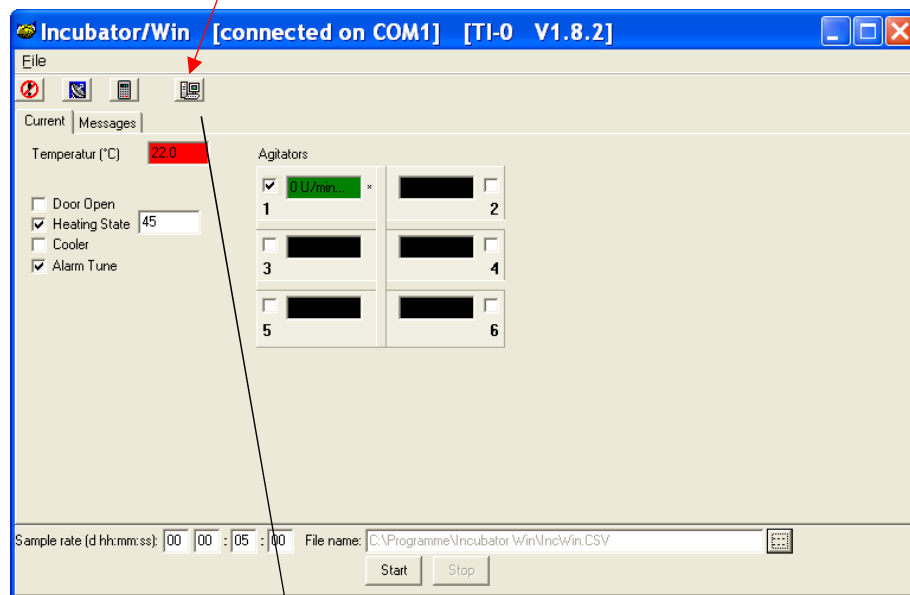
Now we need for the configuration the serial port number
Please see above - The serial Port from the device manager = for example 9.

Copy the complete folder IncWin from USB Stick to your computer.

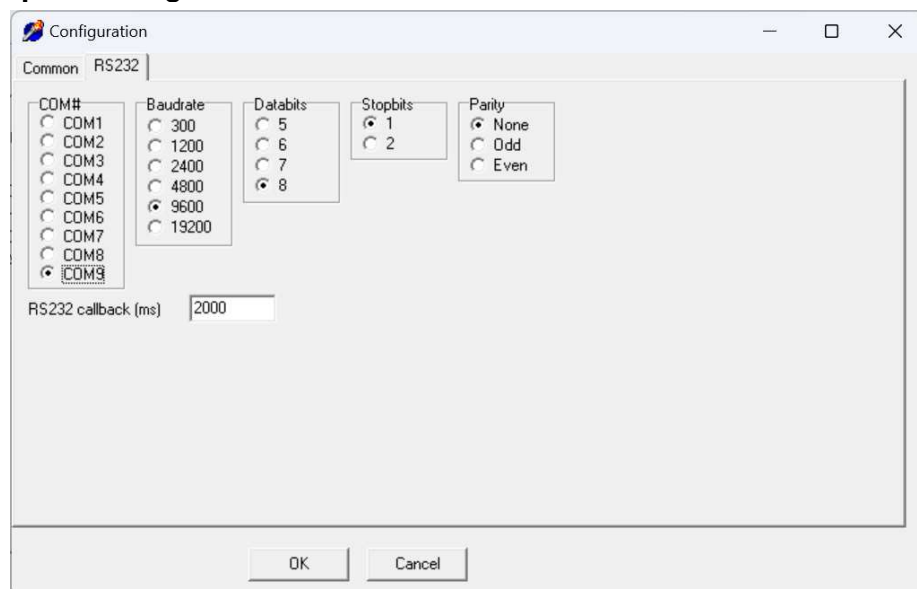
Start the software with IncWin.exe.

Open the configuration in Incubator/Win

Window Incubator / WIN



Configuration port settings



All other settings preset and ok.

Exit with OK and save changes.

Connect the cable with virtual USB adapter to the Incubator connector "PC – RS 232" on the back of the device and call software "IncubatorWin".